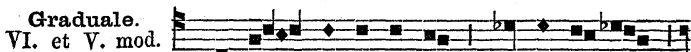
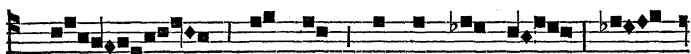


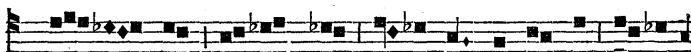
Graduale.
VI. et V. mod.



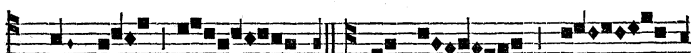
Con - sti - tu - es e - os prin - ci - pes



su - per om - nem ter - ram: me -

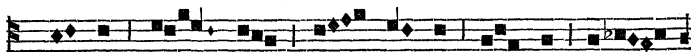


mo - res e - runt no - mi - nis tu - i, Do -

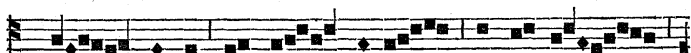


mi - ne.

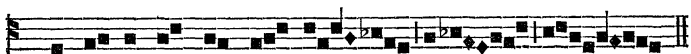
V. Pro pa



tri - bus tu - is na - ti sunt ti - bi fi -

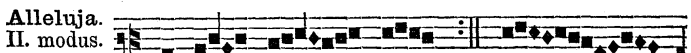


- li - i pro - pte - re - a po - pu - li



con - fi - te - bun - tur ti - bi.

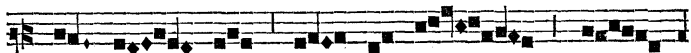
Alleluja.
II. modus.



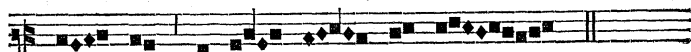
Al - le - lu - ja.



V. Di - le - xit An - dre - am



Do - mi - nus in o - do -



- rem su - a vi - ta - tis.